



R O O S H A D S H R O F F

STAINLESS STEEL FURNITURE

FOLD

Material: Type 304 stainless steel

Year: 2014

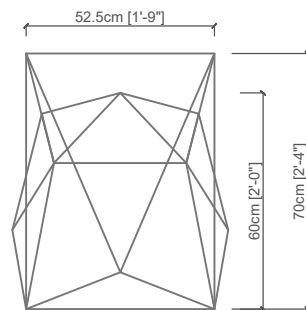
Lead Time: 45 Days

This collection comprises chair, table and bench designs, each shaped by folding a singular steel sheet, the concept originating from the idea of Origami and folded plates.

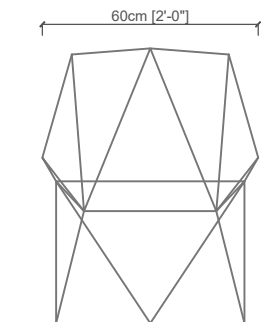
The challenge was to maintain the thinness of each piece and still ensure the firmness of the folds to enhance its rigidity, and create some form of design motion that gave it a unique contour. The finish was a combination of both matte and high-gloss polished stainless steel.

The Fold collection was created and showcased at India Design 2015 in New Delhi; it was one of eight winning entries in the design competition organised by the Godrej Design Lab (GDL) in association with Elle Décor, as a result of which they helped develop prototypes and produce the collection.

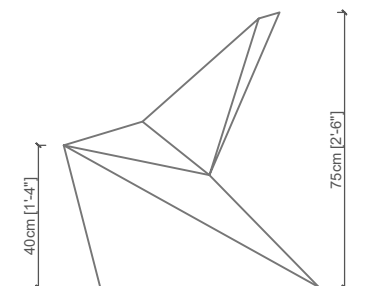




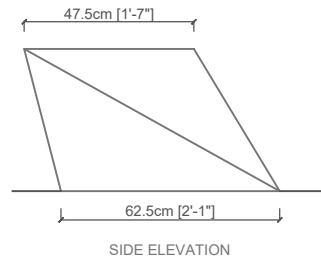
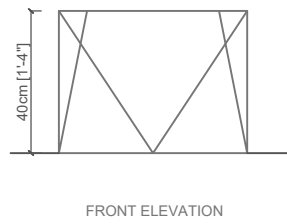
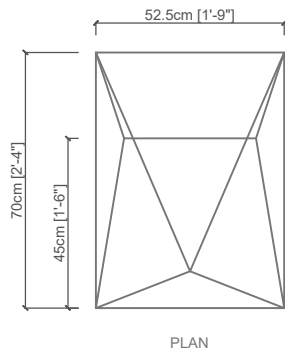
PLAN

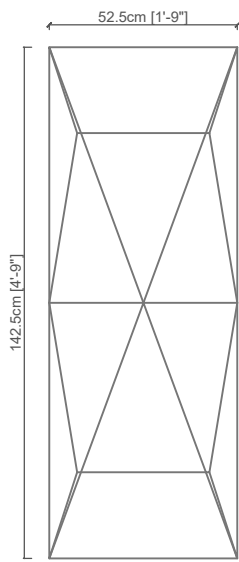


FRONT ELEVATION

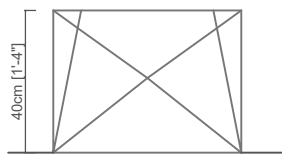


SIDE ELEVATION

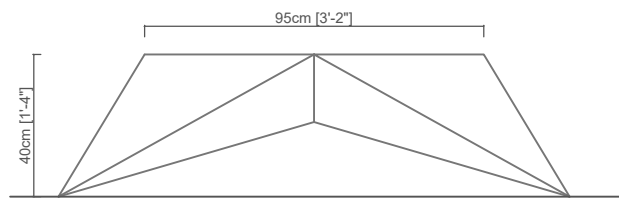




PLAN



FRONT ELEVATION



SIDE ELEVATION