

A stylized, handwritten signature in black ink, consisting of two main parts: a cursive 'R' followed by a more complex, flowing script that resembles 'OOSHADSHROFF'.

R O O S H A D S H R O F F

## C-CHAIR

### C-SERIES

**Dimensions:** 2' x 1' 8" x 1' 6" ht.

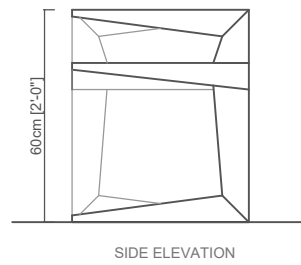
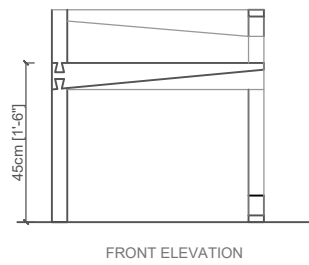
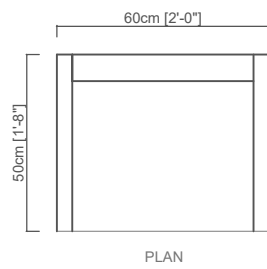
**Material:** Recycled old Burma teak wood with natural PU polish, no added colour.

**Year:** 2012

**Lead Time:** 45 Days

Part of the C-Series collection, the C-Chair pushes the boundaries of woodwork by taking on a cantilevered form. Devoid of screws, metal fasteners or power tools, the handcrafted individual segments make use of exquisite traditional joinery in recycled old Burma teak wood, thereby addressing issues of sustainability pertaining to both resources and craftsmen. Each piece is individually signed with an inlay of hand-cut brass. A complete knockdown construction allows for the chair to be disassembled with ease, thus facilitating easy transportation and re-assembly.





C CHAIR

Recycled old burma teak wood with natural  
PU Polish, no added colour



C CHAIR

Recycled old burma teak wood with open  
grain, water based PU polish

